

NEW

BEVERLY

ACCESSORIES MANUAL



NEW BEVERLY: PRODUCT & COLOR RANGE

BEVERLY 300 HPE – 400 HPE



Bianco Luna



Blu Oxygen



Grigio Cloud

BEVERLY S 300 HPE – 400 HPE



Arancio Sunset



Nero Tempesta



Argento Cometa

NEW BEVERLY: ACCESSORIES RANGE KEY PILLARS



AESTHETICS

Totally updated design featuring modern, strong lines with motorcycles influence
New dynamic, modern identity in line with vehicle



HITECH & SECURITY

Cutting-edge technology equipment:
keyless system, Piaggio MIA
Specific testing and approval by Piaggio R&D Center



ORIGINAL QUALITY

Superior materials that last throughout vehicle's lifespan
Credible original equipment manufacturer



VEHICLE
ACCESSORIES

NEW BEVERLY: ACCESSORIES

Assorted accessories packs for diverse needs



URBAN



- Top case mechanical/keyless
- Windscreen 'Urban'
- Saddle-Handlebar Mechanical Antitheft



HEATING



- Heated Saddle 'Comfort'
- Heated Handgrips
- Leg Cover 'Comfort+'
- Leg Cover Heating Kit
- Control Unit + Mounting Kit For Heating Accessories



SPORT



- Smoked Flyscreen
- Sport Handguards
- Sport Exhaust
- Sport Floormat

NEW BEVERLY: ACCESSORIES

LOADING



PAINTED MECHANICAL TOPBOX 36LT SUPPORT & BACKREST INTEGRATED

CM3233**

- Painted top box capacity 36Lt, capable of housing a full face helmet with visor. Color and design matching with vehicle.
- Includes kit mounting support
- Backrest included, made in same color and material as saddle.



Bianco Luna XB3 533 (STD)
CM323301



Arancio Sunset A12 (S)
CM323305



Blu Oxygen B12 (STD)
CM323303



Nero Tempesta N12 (S)
CM323304



Grigio Cloud G04 (STD)
CM323302



Argento Cometa H4 760/B (S)
CM323306

M : MATT COLOR



EMBOSSED MECHANICAL TOPBOX 52LT

1B008655

Quick-release embossed top case capacity 52Lt - capable of housing one full face/modular helmet or two full jet helmets. Possible to install painted cover CM3197** as accessory to match with vehicle's body paint.

Kit mounting support included. Backrest sold separately



BACKREST FOR TOPBOX 52LT

Backrest made with same color, material and stitching with saddle. A delicate touch that complete the look and functionality of the top box. To be sold separately from top box



CM324701
Dark Brown



CM324702
Black



NEW BEVERLY: ACCESSORIES

LOADING



PAINTED COVER FOR TOPBOX 52LT

CM3197**

- Cover painted in same color of vehicle that allow personalization of embossed top box.
- Backrest available in same color and material as saddle, to be sold separately.



Bianco Luna XB3 533 (STD)
CM319701



Arancio Sunset A12 (S)
CM319705



Blu Oxygen B12 (STD)
CM319703



Nero Tempesta N12 (S)
CM319704



Grigio Cloud G04 (STD)
CM319702



Argento Cometa H4 760/B (S)
CM319706

M : MATT COLOR



KIT TOPBOX KEYLESS 52L

1B007659

KIT SUPPORT INCLUDED.
BACKREST IS NECESSARY AND SOLD SEPARATELY

- The most innovative generation of Piaggio top box using RFID remote control. Components are waterproof up to standard IP67. Internal topbox battery: Topbox plate receive electrical power from vehicle and provides wireless power transfer to function topbox
- Capacity 52Lt, capable of housing one full face/modular helmet or two full jet helmets. Kit mounting support included.
- Backrest made in same color and material as saddle. It is necessary to install back rest (sold separately)



NEW BEVERLY: ACCESSORIES

PROTECTION



KIT WINDSCREEN 'TOP' **1B008844**

Kit windscreen 'TOP' in high quality shock-resistant methacrylate. Splinter proof, 4mm thick. Shortened shafts and with bracket cover. Tested and approved by Piaggio R&D Center



KIT FLYSCREEN SMOKED **1B009098**

Kit flyscreen in high quality shock-resistant polycarbonate. 4mm thick, with smoked effect. Tested and approved by Piaggio R&D Center



KIT WINDSCREEN 'URBAN' **1B008845**

Kit windscreen 'URBAN' in high quality shock-resistant methacrylate. Splinter proof, 4mm thick. Handguard integrated. Metal shafts as standard. Tested and approved by Piaggio R&D Center



KIT FLYSCREEN TRANSPARENT **1B008846**

Kit flyscreen in high quality shock-resistant polycarbonate. 4mm thick, transparent color. Tested and approved by Piaggio R&D Center



NEW BEVERLY: ACCESSORIES

PROTECTION



HAND MITTENS
605690M

Handgrips cover with water-proof thermal padding that guarantee complete protection in cold weather. Customized with Piaggio logo.



OUTDOOR VEHICLE COVER
607633M

Vehicle protection cover with zip regulations to hold additional accessories.
Customized with reflective logo.

NEW BEVERLY: ACCESSORIES

COMFORT



HEATING ACCESSORIES CONTROL MODULE **1D003604** KIT MOUNTING ECU **1D003776**

- This management system allows simultaneous connect of all the heating accessories (Leg cover, Heated saddle, Heated grips). All accessories function (including heat-intensity adjust) will be managed directly from the **vehicle's dashboard through commands with pictograms thanks to Piaggio MIA system**. The quick shut-off function allows rider to deactivate the system in a few seconds. The heating accessories can be installed in triplet group, in pair and also separately.
- All heating accessories need Piaggio MIA Device **607687M** to function properly



HEATED SADDLE COMFORT+ **1B008848**

Saddle with heating module integrated in the driver's area. Adjustable on three levels of intensity. The fast heating system that allows to bring the item to the desired temperature in less than 180 seconds.



HEATED HANDGRIPS **1C006052**

Increase riding comfort during cold weather. The temperature can be set to four different levels. In order to install this kit, the vehicle must be equipped with the heated accessories control unit



LEG COVER COMFORT+ **607582M**

New concept of "hi-end" leg cover to improve the all-season riding comfort: designed on the vehicle shape, water resistant, modular and easily convertible accordingly with climate conditions. TPU finishing, innovative anti-waving, system with stabilizing inserts, anti-theft, heating system housing and reflecting graphic & Logo



LEG COVER HEATING MODULE **1D003812**



NEW BEVERLY: ACCESSORIES

SPORT & PERFORMANCE



SPORT EXHAUST BEVERLY 400

1A020153



For reference only. Not final product

Manufactured by Piaggio X Akrapovic.

Racing inspired design, with sporty outlook and provocative sound

Material: Steel and carbon

Tested and approved by Piaggio



EXHAUST BEVERLY 300

1A020152



For reference only. Not final product

Sporty design, racing spirit inspired
Material: Steel and carbon
Manufactured, tested and approved by Piaggio



KIT SPORT HANDGUARDS

1B008842

Kit handguards with external safety slider. Provide extra security while adding a touch of sportiveness to handlebar.

SECURITY



**SADDLE-HANDLEBAR
MECHANICAL ANTITHEFT**
605537M034

- Extremely simple and easy to use mechanical anti-theft system which anchors the handlebar to the vehicle with a fastener system fixed to the body.
- Practical, clean, fast, safe and comfortable.



ELECTRONIC ANTITHEFT DEVICE
1D002554
 **KIT INSTALLATION**
1D003777

- New generation self-powered electronic anti-theft device, with improved sensibility and security operations. Multi-function remote control. Reduced energy consumption. CE homologated
- Kit installation is necessary and sold separately.

TECH

PIAGGIO MIA MULTIMEDIA PLATFORM (PMP 3.0)



607687M

KIT INSTALLATION

607680M

- Piaggio MIA is the latest generation of Piaggio Multimedia Platform (PMP v3.0). It allows easily connection to Smartphone (iOS and Android) to the scooter, transforming it into a real multimedia platform. The App also enable users to manage all the information relating to the vehicle and useful information for the trip.
- Piaggio MIA is a standard equipment on Beverly 400 HPE, and an accessory on Beverly 300 HPE. Installation kit 607680M sold separately.
- MIA functions include: Mobile phone interface, Phone and media management, Vehicle management, Live tracking
- *It is necessary to install Piaggio MIA together with Heating Control Module and Heating Mounting Kit to enable functionality of Heating Accessories (Heating Saddle, Handgrips, Leg cover)*

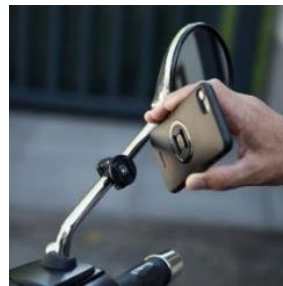


TECH



KIT SMARTPHONE SUPPORT 607001M*

- Smart locking system, using Patented SP connect support and smartphone cover, allow a safe and stable position of your smartphone on the cockpit of your scooter or your motorcycle. The shock-absorbing compound of the smartphone cover ensure safety to your device against scratches and falls.
- Suitable for the main Smartphones currently on the market. With a simple 90 ° rotation, the cover is fixed in a stable and secure way onto the support, ensuring a comfortable and safe positioning of the phone, and easy access to information on the screen.
- The shock-resistant cover shows the Piaggio Group logo, laser-engraved in relief.





RIDER ACCESSORIES



PIAGGIO FULL JET HELMET

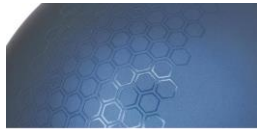
606700M***

ABS Thermoplastic resin shell with modern and aerodynamic design
Removable and washable lining
Micrometric retention system
Moulded Scratch-Resistant Visor for a better coverage against weathering
The Wide Visor can also offer a larger View
Retractable inner sun visor with lower edge control
Upper Air intake with optimized air-flow
Piaggio Label on the internal lining
UV Resistant coating; Available colors: White, Grey, Black
Homologated ECE 22.05



Grigio Cloud G04
606700M01GY




PIAGGIO MIRROR BT HELMET
607688M01WH

Demi-jet monoshell helmet, made in ABS material.
 Polycarbonate 2mm Visor with antiscratch treatment & ultralight aluminum mechanism
 Retractable sunvisor in the front part of the shell
 Exclusive Exagon graphic with tone-on-tone Mat/Glossy decal, enhancing the Piaggio Modern and Hightech DNA
 Breathable and antibacterial Piaggio customized lining
 Micrometric buckle
 patented ECE 22.05 approval.
 Made in ITALY
 Sizes from XS to XL.
 2 earphones. Stereo.
 Possibility to listen to music and follow GPS instructions.
 Driver-to-passenger intercom with connection to other devices.
 Integrated microphone with micro USB port.
 Prepared for Bluetooth connection to enabled phones.
 Double-link function: in addition to the mobile phone, another speaking device can be connected via Bluetooth.
 All electronic components are integrated within the headset.
 Unique intuitive button located on the microphone.
 Red / blue LED light indicating the status of the device placed on the microphone.
 Call answering function using voice command.


Nero Tempesta N12
607688M0*BK

Argento Cometa H4 760/B
607688M0*AC

Bianco Luna XB3 533
607688M0*WH

Arancio Sunset A12
607592M0*AL

PIAGGIO MIRROR HELMET
607592M0***

Demi-jet monoshell helmet, made in ABS material.
 Polycarbonate 2mm Visor with antiscratch treatment & ultralight aluminum mechanism
 Retractable sunvisor in the front part of the shell
 Exclusive Exagon graphic with tone-on-tone Mat/Glossy decal, enhancing the Piaggio Modern and Hightech DNA
 Breathable and antibacterial Piaggio customized lining
 Micrometric buckle
 patented ECE 22.05 approval.
 Made in ITALY
 Sizes from XS to XL.

PIAGGIO MIRROR BT HELMET

607688M01WH



Bianco Luna XB3 533
607688M0*WH

PIAGGIO MIRROR HELMET

607592M0***



Blu Oxygen B12 (STD)
607592M0*BB

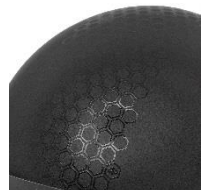
PIAGGIO FULL JET HELMET

606700M***



Grigio Cloud G04
606700M01GY

Beverly



Nero Tempesta N12
607688M0*BK



Argento Cometa H4 760/B
607688M0*AC



Arancio Sunset A12
607592M0*AL

Beverly S



Nero Abisso 79/A
607592M0*B



Blu Cobalto D06
607592M0*BL



Grigio Materia HY
607592M0*GY



Bianco Luna BR
607592M0*WH



Nero Meteora 93/b
606700M0*MB



Bianco
606700M0*WH



Grigio Elemento XE8
606700M0*MG

NEW BEVERLY: RIDER ACCESSORIES

TECH



BLUETOOTH COMMUNICATION SYSTEM

606948M

- 2 earphones. Stereo. Possibility to listen to music and follow GPS instructions. Driver-to-passenger intercom with connection to other devices.
- Integrated microphone with micro USB port. Call answering function using voice command. Prepared for Bluetooth connection to enabled phones.
- Double-link function: in addition to the mobile phone, another speaking device can be connected via Bluetooth. Red / blue LED light indicating the status of the device placed on the microphone.
- All electronic components are integrated within the headset. Simple to install. Unique intuitive button located on the microphone.
- 4 micro covers in color and branded with Piaggio Group different brands. FCC homologation approved.

NEW BEVERLY: TECHNICAL APPAREL



Piaggio Summer Touch Gloves

606772M0*PTG



Stretch textile gloves very good for warm climates: their Clarino microfiber and vented inserts provide great comfort of use and air transpiration. For mid-range commuting and urban commuting during summer time

- NEW: insert on the tip of the index, in technical conductive material of electric charge, that allows the control of touch screens on multimedia devices,
- Punched mesh fabric
- Elasticized fabric
- High resistant suede microfiber palm
- Neoprene cuff with Velcro closure
- Thermoplastic rubber knuckle protectors
- Product weight: 0,10
- Piaggio logo on injection rubber label on the wrist closure.
- Color: Black

Piaggio ¾ Winter Gloves

606880M0*



Waterproof glove, ideal for the cold season and urban commuting. Characterized by abrasion-resistant fabrics and knuckle protection in Powertech, it is EN13594 certified.

- Tenax flex fabric in high-tenacity, high-strength nylon 6.6, maximum abrasion resistance
- 100gr cotton wool thermal lining
- Waterproof, breathable and windbreak H2Out
- Elasticized wrist closure
- Knuckle protectors in variable density polyurethane for shock absorption
- Reflex zones for night identification; Reflective Piaggio logo
- Silicone inserts on the fingers that incorporate the Piaggio logo
- Sizes: S-3XL

Piaggio Windstopper Gloves

606879M0*



Designed specifically for short trips in the city and mid-season tourism. Made in GORE-TEX Infinium with WINDSTOPPER® technology, they guarantee the cancellation of the wind-chill effect and absolute comfort without compromising riding feeling on the handlebar controls. EN13594 certificates.

- External shell in GORE-TEX Infinium with WINDSTOPPER® technology
- Leather reinforcements on palm and thumb
- Hard plastic knuckle guards placed under the fabric
- Protective inserts in soft polyurethane foam on the outside of the fingers and thumb
- Compatible touchscreen insert on the tip of the index, for the control of electronic devices
- Sizes: S-3XL
- Piaggio logo embossed on the insert placed on the outside of the wrist
- EN 13594: 2015 level.1

Illustrations in this document may differ from final products



NEW
BEVERLY